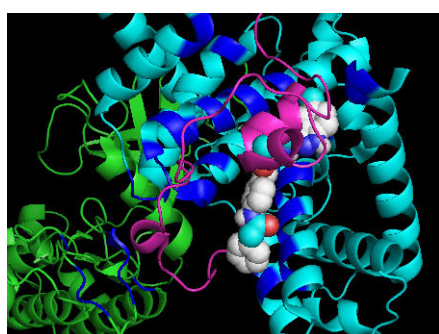
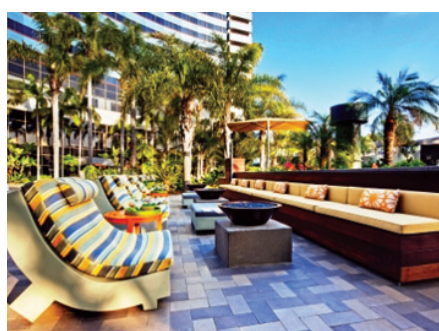
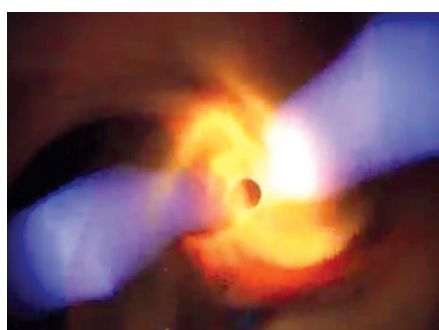


# XSEDE[13]

GATEWAY TO DISCOVERY



## REGISTRATION NOW OPEN

**Marriott Marquis & Marina  
July 22-25 | San Diego**

XSEDE13 will support and enhance the world of advanced digital resources and services and highlight scientific discovery facilitated through Science Gateways.

### THIS CONFERENCE WILL FEATURE:

- Tutorials
- Keynotes
- Lightning Talks
- Student Presentations of Papers and Posters
- Visualization Showcase
- Extensive Job Fair
- Biosciences Day
- Focus on scientific gateways
- Science, Technology, and Education/Outreach Tracks

XSEDE, the Extreme Science and Engineering Discovery Environment, is a National Science Foundation-supported project that brings together supercomputers, data collections, and computational tools and services to support science and engineering research and education. The annual XSEDE conference focuses on the science, education, outreach, software, and technology used by the XSEDE and other related communities worldwide.

[xsede.org/web/xsede13/registration](https://xsede.org/web/xsede13/registration)

# XSEDE

Extreme Science and Engineering  
Discovery Environment

