

# XSEDE[13]

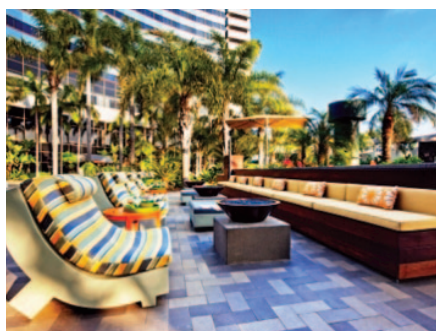
GATEWAY TO DISCOVERY



## STUDENT DAY

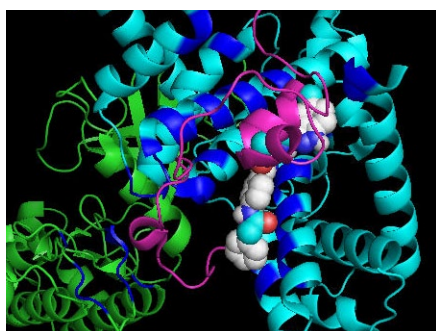
### Applications due May 15

High school and undergraduate students are invited to spend a day immersing themselves in computational science research during the XSEDE13 conference's Student Day on Wednesday, July 24.



Participants will meet peers from across the country during a full day and evening featuring hands-on experiences, a bioinformatics panel discussion with national leaders, student-focused talks, a luncheon with researchers, a student poster session, an internship and job fair, and a visualization showcase.

Student Day is limited to 50 high school and undergraduate students; applications are due May 15, 2013. For full details and to apply, visit <https://www.xsede.org/web/xsede13/students>.



**Questions? Contact Ange Mason at 858-534-5064 or [amason@ucsd.edu](mailto:amason@ucsd.edu).**



XSEDE13 is the annual conference focused on science, education, outreach, software, and technology related to the National Science Foundation's eXtreme Science and Engineering Discovery Environment. XSEDE13 will bring together hundreds of scientists, technology experts, educators, and students July 22-25, 2013, at the Marriott Marquis & Marina in San Diego. Visit <https://www.xsede.org/web/xsede13> for information and to register.

[xsede.org/web/xsede13/students](https://www.xsede.org/web/xsede13/students)

## XSEDE

Extreme Science and Engineering  
Discovery Environment

